

MAKE FEMINIST THEORY MAINSTREAM!

.....



Message from the Board

We are very excited to roll out our very first issue of the FAEF Newsletter! This is just one of the ways we are hoping to build a solid community of scholars and researchers working with Feminist Applications in their work. In just the few years since we initiated the SIEF Working Group on Feminist Approaches to Ethnology and Folklore, we've been quite active – multiple panel sessions at SIEF in Brno and Aberdeen; our online, annotated bibliography; two journal issues in the works; and an interim workshop in 2024, with the second planned in Aug. 2026 (see our announcement). With the launch of the newsletter, we hope to keep our members informed about what we are all working on, and how we might grow our working group in productive and meaningful ways. Welcome!

co-chair of the FAEF Working Group

JoAnn Conrad

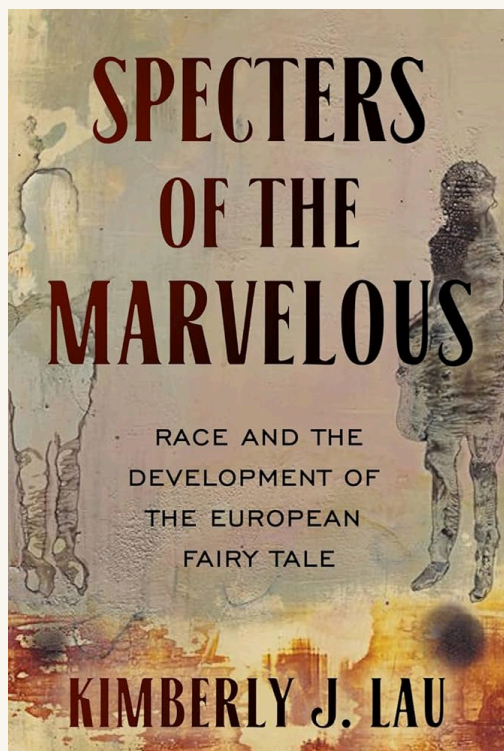
Welcome to new members!

We'd like to welcome several new members who have joined the working group since Aberdeen:

- **Reza Bayat**
University of Goettingen
- **Barbora Benešová**
Faculty of Social Sciences,
Charles University
- **Sabine Eggman**
University of Zürich
- **Line Esborg**
University of Oslo
- **Nina Fárová**
Institute of Sociology,
Czech Academy of
Sciences
- **Mintzi Martinez Rivera**
The Ohio State University
- **Alice McAlpine-Riddell**
University College London
- **Blanka Nyklová**
Institute of Sociology of
the Czech Academy of
Sciences
- **Ane Ohrvik**
University of Oslo
- **Luisa Pitanga**
Universidade Federal do
Rio Grande do Sul

- **Oriane Girard**
Institut d'ethnologie et
d'anthropologie sociale
- **Rachel Gonzalez-Martin**
University of Texas
- **Marja-Leena Jalava**
Finnish Literature Society
- **Bogna Kietlinska-
Radwanska**
University of Warsaw
- **Lotta Leiwo**
University of Helsinki
- **Mary Magoulick**
Georgia College and State
University
- **Rebecca Rehnström**
University of St. Andrews
- **Hanna Scheffold**
University of Tübingen
- **Sarah Shultz**
Memorial University of
Newfoundland
- **Elena Sottilotta**
University of Cambridge
- **Jessica Turner**
American Folklore Society

News and tips from our members:



NEW BOOK!

**Specters of the Marvelous:
Race and the Development of
the European Fairy Tale** by
Kimberly J. Lau. Wayne State
University Press, 2025.

FAEF Working Group member
Kimberly J. Lau's book is an
essential read for anyone
working on the Literary Fairy
Tale and its history, as well as
the history and naturalization of
a racial ideology throughout the
West.

Lau's premise – that constructions of race and racial hierarchies not only run through the literary canon but are in fact constitutive of that material – challenges disciplinary convention. Her examples, taken from the literary canon of Basile, Mme. d'Aulnoy, the Grimms, and the Langs' Colored Fairy Books, chart a centuries-long, deeply embedded, and unmarked whiteness that not only runs through fairy-tale collections but also their interpretations.

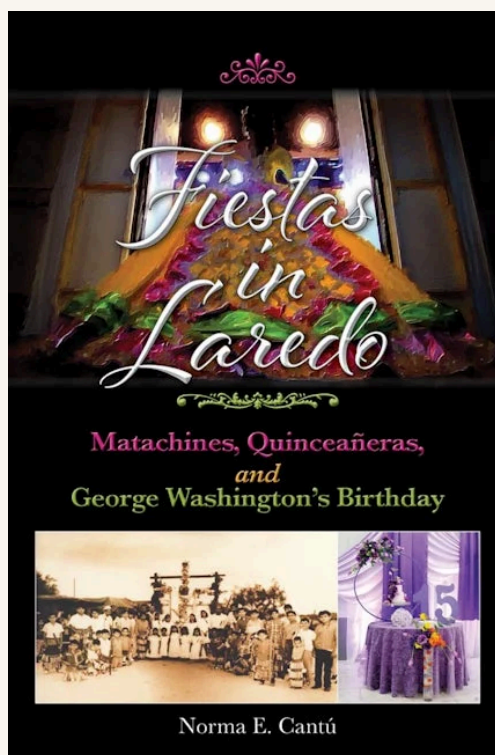
During the last AFS meeting, Lau's book was awarded the 2025 Chicago Folklore Prize. This is the oldest international award recognizing excellence in folklore scholarship. We all congratulate Kimberly Lau with this amazing accomplishment!

More reading tips:

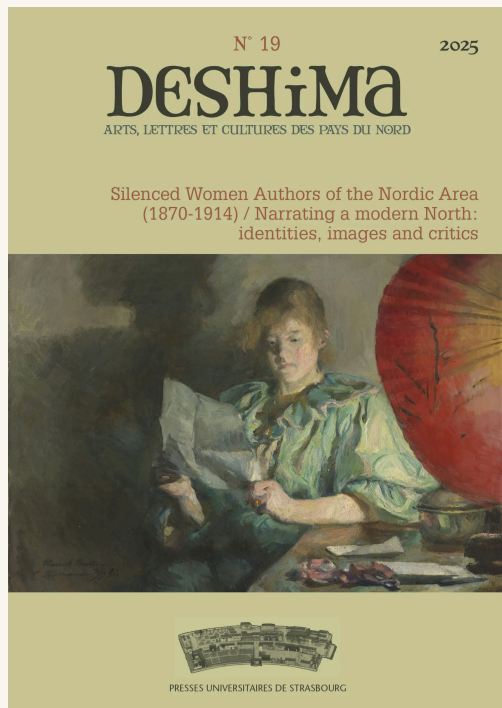
From workshop to publication

WG Member **Norma Cantú** who presented a paper during the working group's first interim meeting in Hólmavík in 2024, turned her paper into a chapter of her book *Fiestas in Laredo: Matachines, Quinceañeras, and George Washington's Birthday*.

Have a look



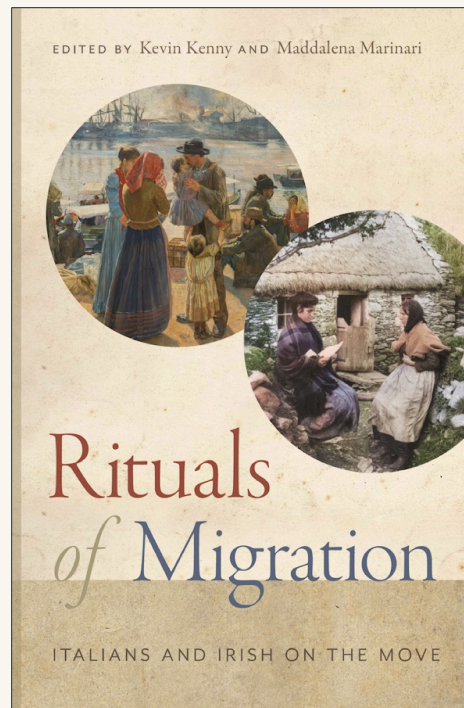
Check out some of the articles recently published by our members:



FAEF members in *Deshima* no.19 (2025)

- **Dagrún Ósk Jónsdóttir**,
"The Disappearance
of Torfhildur Hólm (1845-
1918)."
- **JoAnn Conrad**,
"Disappearing Acts: The
Erasure of Anna
Wahlenberg (1858-1933)."

[More](#)



Chapter Featured in a Monograph (2025)

Donna Gabaccia and **Joan L. Saverino**, "Chapter 3 Trousseau Textiles, Transnational Travels of Two Copriletti," in *Rituals of Migration. Italians and Irish on the Move*, ed., Kevin Kenny and Maddalena Marinari (New York: New York University Press, 2025).

[More](#)

Other news from our members:

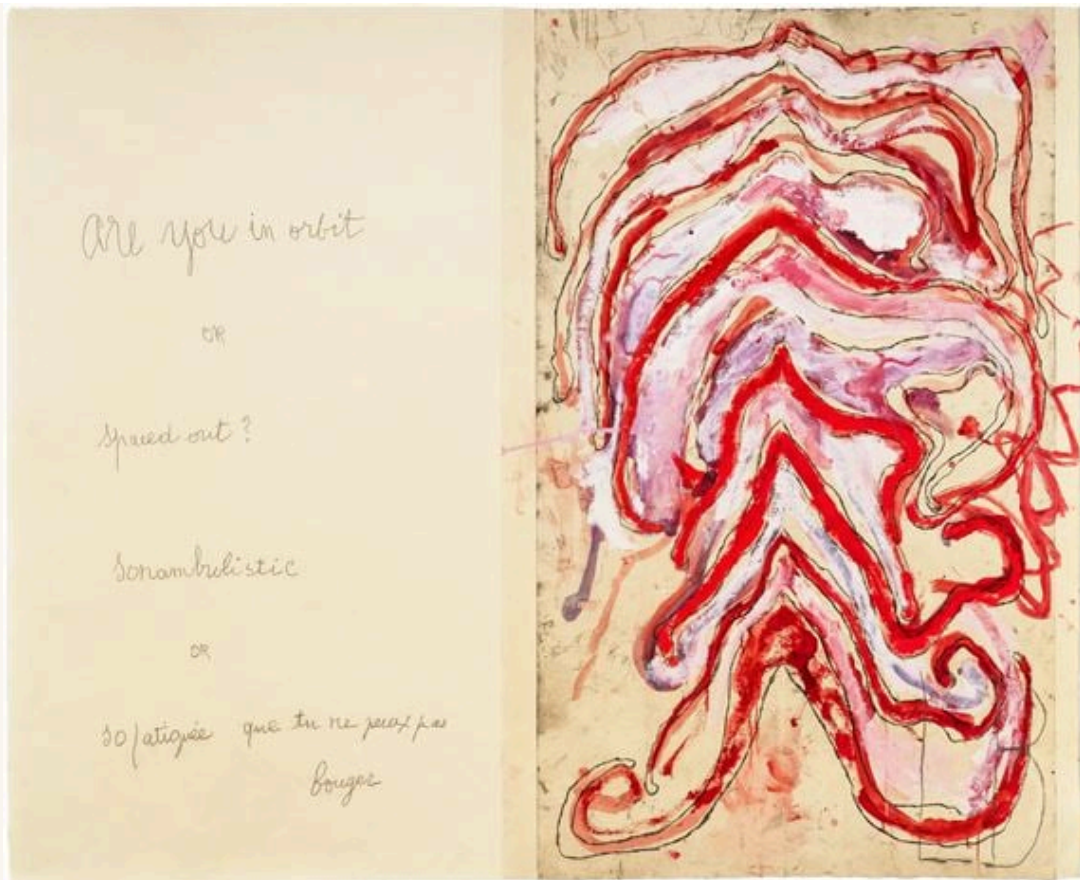


Working group member **Gabriela Fatková** recommends the work of **Mwenz Bell**, a feminist anthropologist from Newcastle University. Her [short films](#) and [publications](#), particularly on the body, tie in nicely with the topic for our upcoming interim meeting in Helsinki next year.



Working group member **Amy Skillman** gave her presidential address, entitled "You Gotta Go with Your Gut: Navigating Risk and Fear in the Storm", at this year's AFS meeting. The address is based on a paper she developed first at our FAEF interim meeting in Hólmavík in 2024.

Upcoming FAEF events



Helsinki, 13–15 August 2026

2026 WG FAEF Workshop *'Embodiment Revisited'*

Our next interim workshop will take place from 13 – 15 August 2026 in Helsinki with the theme Revisiting Embodiment. Although embodiment has long been a central concern of feminist theory, we consider the topic as it intersects with feminist theory to be unfinished business. During this two-day workshop, which includes guest lectures and also breakout groups, we will revisit the concept and its uses for feminist theory. Are you interested in joining us? Have a look at our [call for applications](#) and submit your application before **1 February!**

Days left to apply:

53

Days

08

Hours

53

Minutes

12

Seconds

Upcoming zoom discussion:

'Throwing like a Girl'

Our next zoom discussion is scheduled to take place on **Monday 1 December at 07.00 am pacific time**. We will discuss **Iris Young's** article '*Throwing like a Girl: A Phenomenology of Feminine Body Comportment Motility and Spatiality*.' The discussion will be facilitated by **Kimberly J. Lau**. Please join us for what will certainly be an exciting discussion!

Meeting ID: 915 075 4556 / Passcode: 050353

Join zoom session

Other events:

ISFNR 'Nature(s) in Narrative' 13–16 June, Reykjavík

The FAEF working group is collaborating on a panel 'Regenerative narratives:

Special issue on feminist approaches

FAEF board members JoAnn Conrad and Rozemarijn van de Wal are the guest editors of a special issue for the journal *Cultural Analysis* on the topic of **Un-writing through feminist**

(eco)feminist entanglement with nature' which focusses on knowledge of nature in a variety of narratives, critiquing distorted notions of woman, sisterhood, or the feminine. Presenters will take an ecofeminist approach on entanglements of gendered domination and exploitation of nature to re-examine cultural categories and explore alternatives. The panel will be chaired by Niina Hämäläinen (Kalevala Society), Jennifer Schacker (University of Guelph), and Natasa Polgar (Institute of Ethnology and Folklore Research). You can find more information [here](#).

approaches. The special issue will be a continuation of papers and discussions that we had during the WG's various (co-sponsored) panels at the SIEF conference in Aberdeen. The issue is scheduled for Fall 2027.

Call for papers 2026 *Lychnos*

Lychnos just published a call for papers for a thematic issue on

Ideas in Movement:

Transnational and Women's

History Perspectives.

The purpose of the thematical issue is to shed light on women's role in transnational circulation of ideas and knowledge production. [Link](#)

A feminist annotated bibliography

We'd like to remind you about our WG's collaborative [annotated bibliography](#), the first research tool of its kind for locating feminist scholarship in a central database. The Zotero tool allows us to tag entries with keywords and to add abstracts. We aim to annotate all entries with a short abstract outlining how the main ideas of the indexed work are relevant to the working group's focus. But to make this dream a reality, we need your help. Please have a look at [our](#)

[instructions](#) and get involved!

On a final note

We hope you enjoyed reading our first ever FAEF newsletter! Do you have anything that you'd like to share via the newsletter? Make sure you submit your publications/events/calls/other tips via e-mail to rozemarijnvdwal@hotmail.nl so we can include your content in the next newsletter (which will be a spring edition). Photos are also most welcome.

**SIEF Working Group in Feminist
Approaches to Ethnology and
Folklore**



You received this e-mail because you signed up as a member of the FAEF working group.

[Unsubscribe](#)

Rights to all included images belong to their respective sources.

